



HEIBEI ALLIANCE CATALOGUE



> Content



Page 4

Temporary
Fence



Page 9

Crowd
Control
Barrier



Page 14

Chain
Link
Fence



Page 19

Steel
Fence



Page 24

Fence
Gate



Page 30

Corral
Panels

> Content



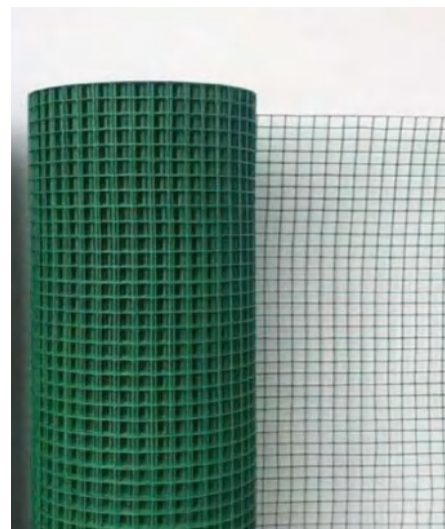
Page 34

Barbed
Wire



Page 36

Farm
Fence



Page 37

Welded
Wire
Mesh



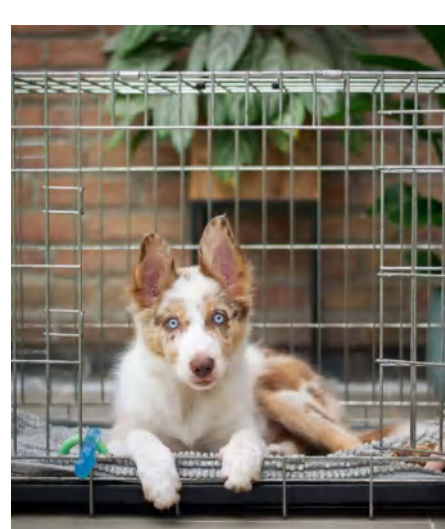
Page 38

Hexagonal
Wire
Netting



Page 39

Steel
Grating

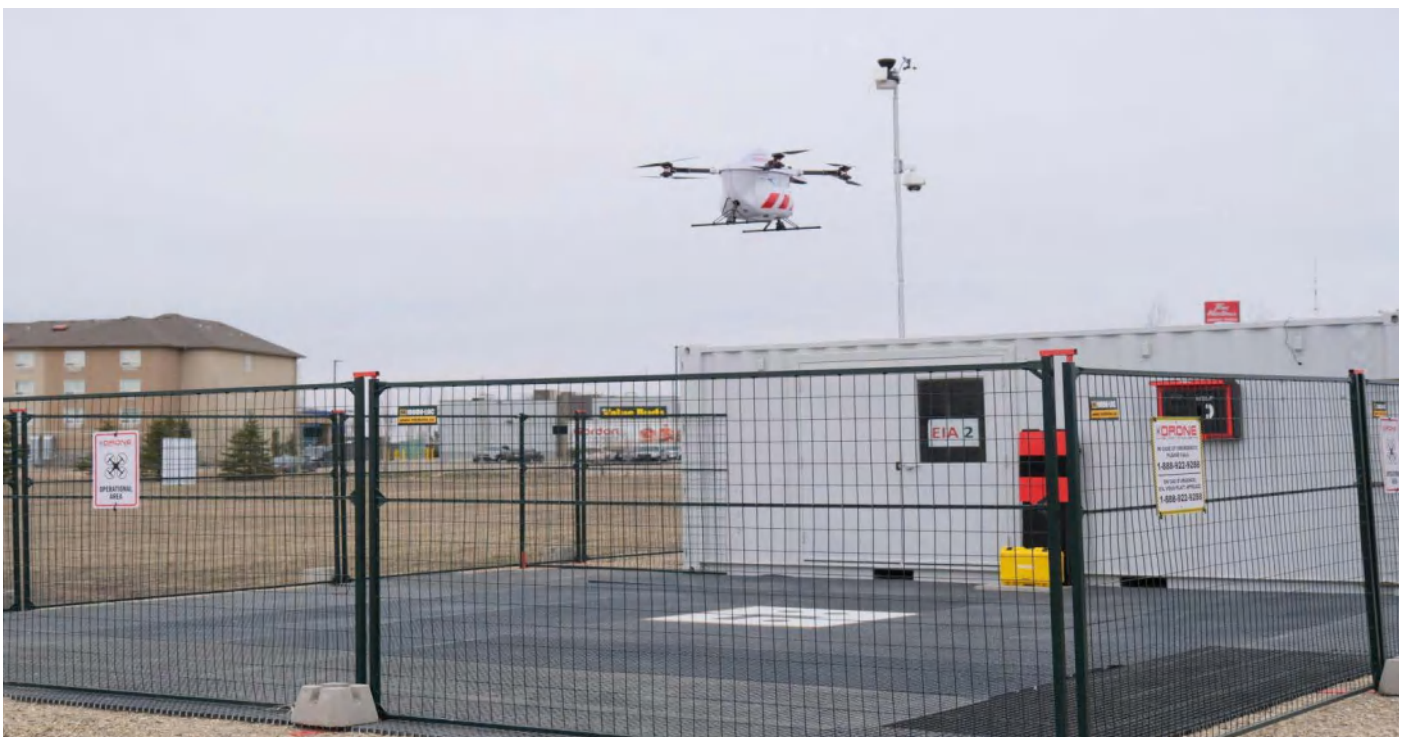


Page 40

Dog Kennel
Pet Cage

Temporary Fence

- Temporary fence is a kind of temporary fence prevailing in North America markets.
- It is constructed by welded wire mesh and square pipes. Fence base plates also provide to make the temporary fence stand firmly on the ground.
- It is strong and durable and is widely used in infrastructure, civil, industrial, commercial and demolition sites, construction sites, accident scenes and a wide range of major public events for storage, public safety, crowd control or theft deterrence.



Specification

A Height × **B** Width

6 ft × 9 ft, 6 ft × 9.5 ft, 6 ft × 10 ft

C Wire Diameter:

3.0 mm, 3.5 mm, 3.8 mm, 4.0 mm, 4.5 mm, etc.

D Mesh Opening:

50 mm × 100 mm, 50 mm × 150 mm, 50 × 200 mm, 75 mm × 100 mm, 75 mm × 150 mm

E Frame:

Outside Frame: 25 x 25 mm, 30 x 30 mm

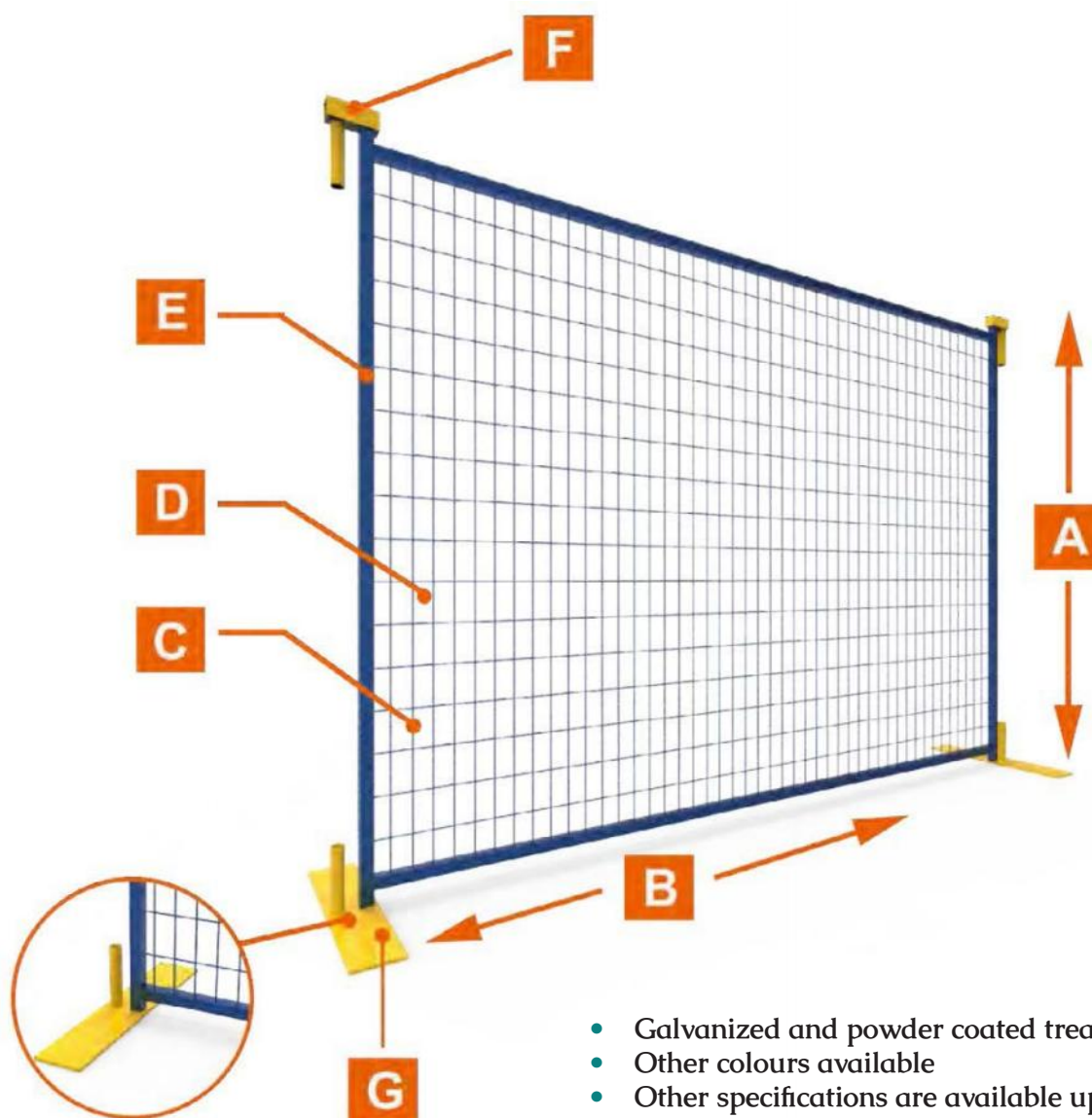
Middle Frame: 20 x 20 mm, 25 x 25 mm

Frame Thickness:

0.8/1.0/1.2/1.5/2.0/2.5 mm

F Clamp: metal clamp

G Base: 563 mm x 89 mm x 7mm, 863 mm x 89 mm x 8 mm, etc.



- Galvanized and powder coated treatment
- Other colours available
- Other specifications are available upon request

Fence Panels, Fence Bases & Top Clips

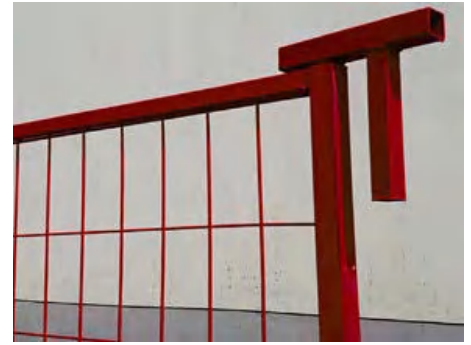
The main component of Canada temporary fence is welded fence panels, fence base and top clip as shown below:



Fence Panels



Fence Base



Top Clip

Optional Accessories



Shade Cloth

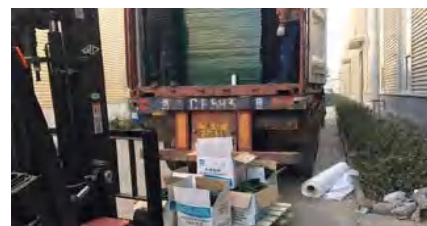


Temporary Fence
with Shade Cloth

Package & Delivery



Fence Panel Package



Fence delivery

Production Flow Chart

01



Raw materials
(galvanized steel wires)

02



Raw materials
(galvanized steel pipes)

03



Steel wire straightening
and cutting

06



Welded wire mesh
frame welding

05



Pipe cutting

04



Wire mesh welding

07



Temporary fence panel
welding

08



Fence panel powder
coating

09



Finished Canada
temporary fence panels

Features

Smooth and elegant appearance

Smooth Surface is well treated to eliminate all burrs for safe installation and removal.

Solid and stable base

Fence base plates provide support and stability

Easy installation and removal

All assembly and disassembly work can be done by one single person without digging holes, which saves both time and labor.

Cost effective

It can be installed and removed many times and for multiple uses.

Light weight and moveable with detachable base

Its light weight and detachable base make it easy to handle and transport.

A wide range of colors

Many colors are available to meet your specific needs.

Application

Temporary fence are designed to provide temporary boundary for various applications and are widely used in infrastructure, civil, industrial, commercial and demolition sites, construction sites, and a wide range of major public events for storage, public safety, crowd control or theft deterrence.



Crowd Control Barrier

- Crowd control barrier, also known as pedestrian barrier or crowd control barricade, are a perfect choice for guiding and restricting crowd and traffic flows to keep people and vehicles from entering restricted areas.
- It is constructed from quality steel pipes and is hand welded for high strength. Interlocking designs makes it easy to connect and shape together creating a seamless barrier.
- Crowd control barrier is widely used in construction sites and many public events, including but not limited to, sports events, concerts, parades, political rallies, demonstrations and outdoor festivals.

Surface Treatment

We have both galvanized and powder coating crowd control barriers for your choice. come in different colours



• Galvanized



• Powder coated



Specification

A Height: 1.1 m, 1.25 m, 1.5 m

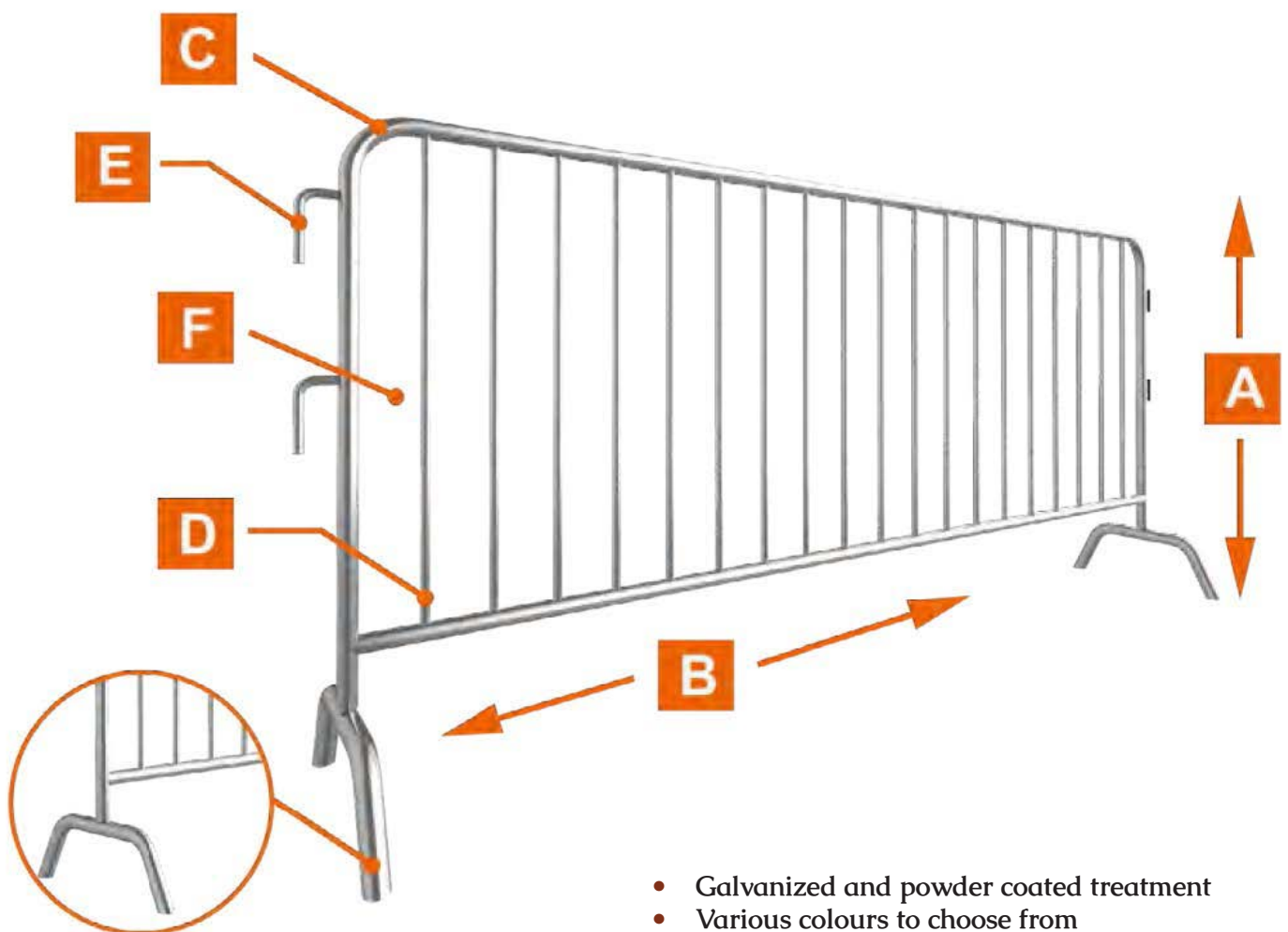
B Width: 2.0 m, 2.1 m, 2.2 m, 2.4 m, 2.5 m

C Frame:
32 × 1.2/1.5/2.0 mm,
38 × 1.2/1.5/2.0 mm,
42 × 1.2/1.5/2.0 mm,
48 × 1.2/1.5/2.0 mm

D Inner pipe:
12 × 0.7 mm, 14 × 1.0 mm, 16 × 1.0 mm,
20 × 1.2 mm, 25 × 1.2 mm

E Connection:
metal hook

F Spacing:
60 mm, 100 mm, 120 mm, 150 mm,
200 mm



- Galvanized and powder coated treatment
- Various colours to choose from
- Other specifications are available upon request

Components & Accessories

We have three kind of bases. Of which, fixed bases are welded to the bottom of the fence panel directly while the flat base and bridge base are bolted to the panel frame.

Their specific features are as shown below:



Fixed Base



Flat Base



Bridge Base

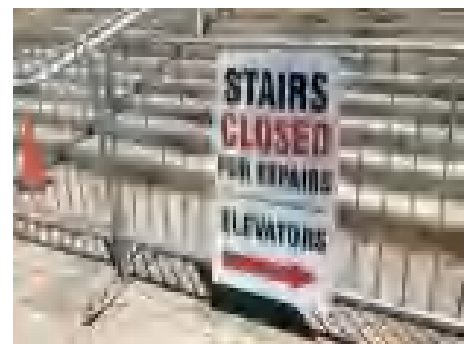
Optional Accessories



Shade Cloth



Customized Logos



Sign Boards

Production Flow Chart

01



Raw materials
(galvanized steel pipes)

02



Pipe cutting

03



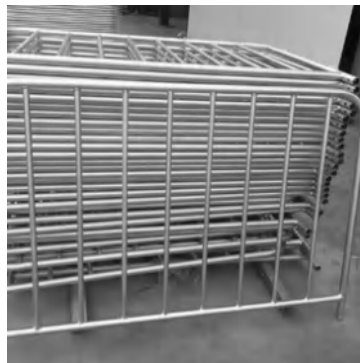
Pipe bending

06



Crowd control barrier
panel storage

05



Finished crowd control
barrier panels

04



Crowd control barrier
panel welding

Package & Delivery



Package



Delivery

Features

Quality material

All crowd control barriers are made of quality material for durability and strength

Full welding design

Full welding design is employed to make the barrier strong and durable.

Excellent surface treatment

Galvanized or power coated surface treatment makes it corrosion and rust resistance and work well in wet and snowy climates.

Detachable bases

Crowd control barriers are provided with detachable bases allows for easy to handle and transport.

Interlocking system

It adopts an interlocking system, which makes two panel are connected easily and firmly.

Various base types

A variety of base types are available for you to choose from and are perfect for all ground surfaces.

Application

Crowd control barrier is widely used in construction sites and many public events, including but not limited to, sport sevents, concerts, parades, political rallies, demonstrations and outdoor festivals.



Bus Station



Crowd Control



Cycling Race



Park Entrance



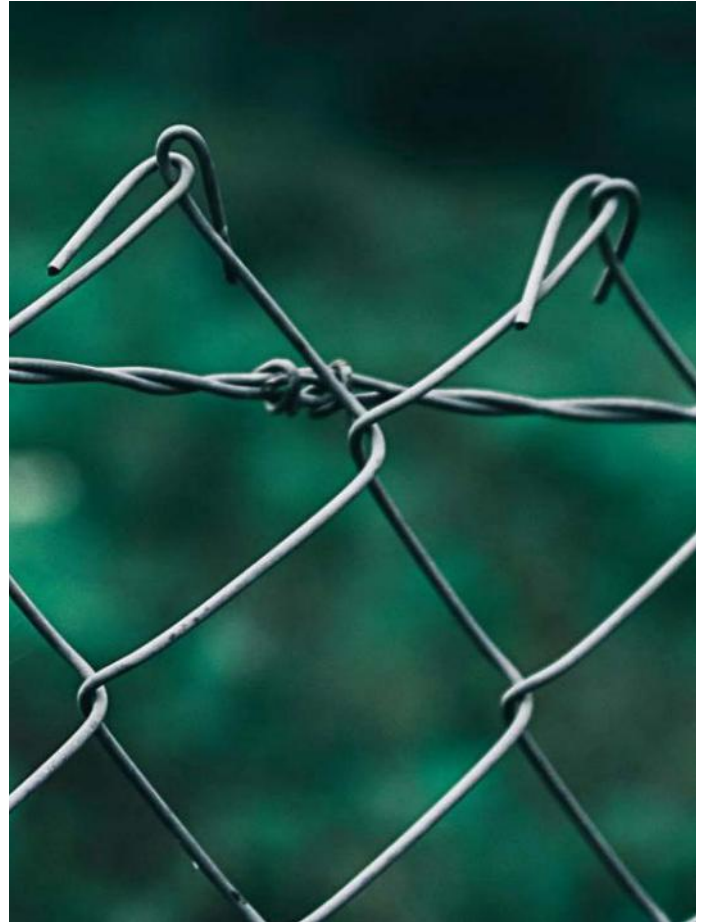
Railway Station



Road

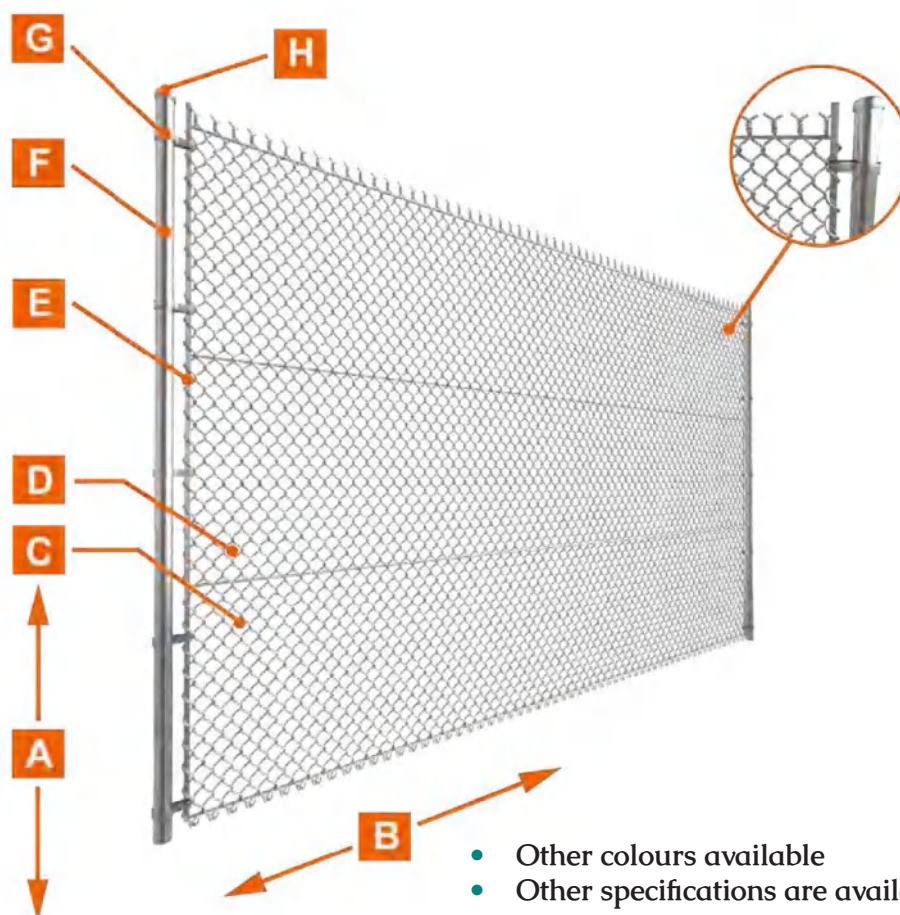
Chain Link Fence

- Chain link fence, also known as cyclone fence, hurricane fence or diamond mesh fence, is a type of woven fence usually made of galvanized or PVC coated steel wire.
- The wires are woven together to form beautiful diamond patterns. It offers a costeffective solution for residential and commercial applications.
- Typically, the shorter heights are commonly selected for residential uses while the taller heights are most often for commercial uses to provide more security.
- It is a great option for road, railway, airport fencing, equipment and facilities protection, pet and small animal raising as well as zoo fencing.



Specification

A Height	0.5–6 m			B Width		50–100 m (or more)			
C Wire diameter	18 Ga. – 13 Ga.			16 Ga. – 8 Ga.			14 Ga. –6 Ga.		
	1.2–2.4 mm			1.6–4.2 mm			2.0–5.0 mm		
D Mesh opening	1”	1.5”	2”	2-1/4”	2-3/8”	2-1/2”	2-5/8”	3”	4”
	25 mm	40mm	50mm	57mm	60mm	65mm	70mm	75mm	100mm
E Tension Bar	25.0 mm × 5.0 mm								
F Round post & rail diameter	32mm	42mm	48mm	60mm	76mm	89mm	Thickness: 0.8–5.0 mm		
G Clamp	Metal clamp								
H Post Cap	Metal rain cap / anti-UV PP cap								



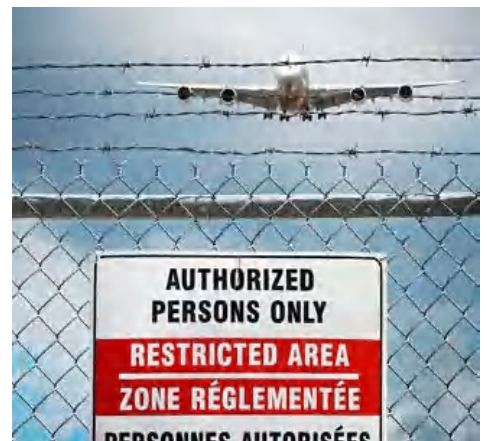
- Other colours available
- Other specifications are available upon request

Fence Panels, Fence Bases & Top Clips

Variety of accessories are available to help you connect and secure your chain link fence properly and firmly.



Razored Wire



Barbed Wire

Production Flow Chart

Galvanized Chain Link Fence

01



Raw materials
(galvanized steel wires)



02



Chain link mesh
production (galvanized)



03



Finished chain link
fence (galvanized)

PVC Coated Chain Link Fence

01



Raw materials (PVC
coated steel wire)



02



Chain link mesh
production (PVC coated)



03



Finished chain link
fence (galvanized)

Features

Security

Can be used as a security barrier to protect properties and assets.

Privacy & visibility

It can protect your privacy while maintain a certain range of visibility.

Affordability

cost effective allows for a range of uses.

Durability

High quality raw materials provide good corrosion, rust and weather resistance.

Versatility

A variety of specifications and accessories for you to choose from to meet all your needs.

Less maintenance

Its high strength, solid structure and corrosion and weather resistance make it last longer and require less maintenance.

Application

Can be widely used for residential and commercial applications to create a secure barrier and provide both visibility and security.

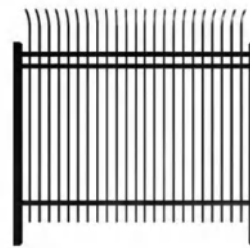


Steel Fence

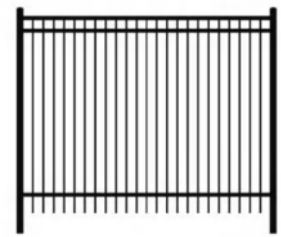
- Steel Fence, also known as tubular steel fence, is a kind of ornamental fence with simple tubular structure yet high defense effect.
- It is made of galvanized steel tubes or aluminum tubes by using vertical steel poles and horizontal rails to form the fence.
- It has excellent anti-corrosion & anti-rust properties and has a long durability. Its high strength makes it an excellent choice for all security purposes while its powder coating surface makes it adapt to most surroundings.
- Our steel fence is widely used in various commercial, residential and industrial applications, including but not limited to, villas, community gardens, schools, factories and other flower beds, lawns, sports stadiums, convention centers, squares, roads, balconies, etc.

Top Pattern

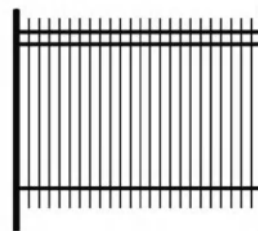
According to their top patterns, our steel fence can be divided into four types as shown below.



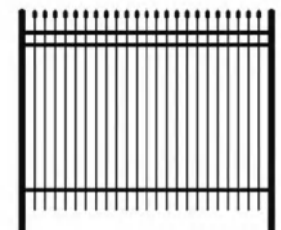
Curved-top steel fence



Flat-top steel fence



Rod-top steel fence



Spear-top steel fence



Specification

A Height: 1200 mm, 1500 mm, 1800 mm, 2100 mm

B Width: 1800 mm, 2000 mm, 2400 mm

C Vertical Picket:
15 mm × 15 mm,
19 mm × 19 mm
25 mm × 25 mm;
Thickness: 0.8–2.0 mm

D Horizontal Rail:
30 mm × 30 mm, 40 mm × 40 mm,
45 mm × 45 mm,
2 rails, 3 rails or 4 rails.

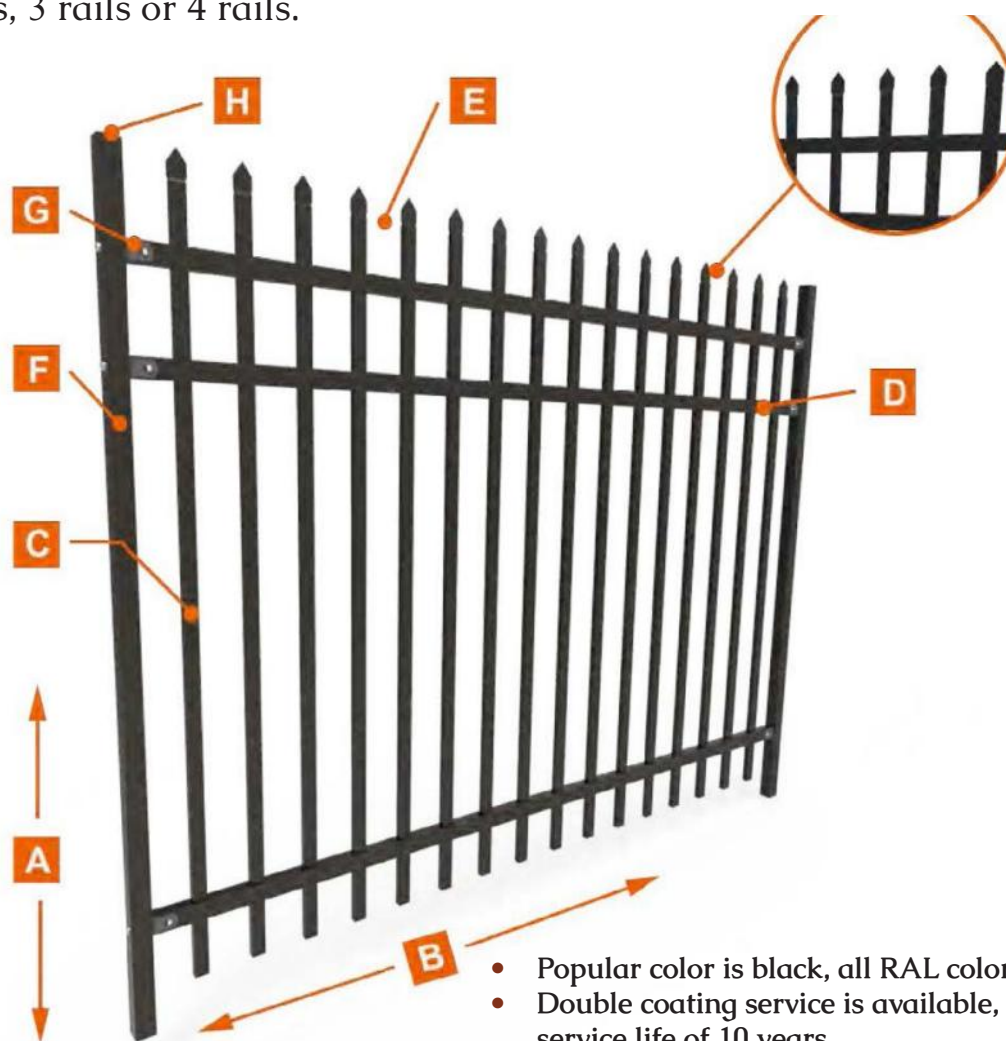
E Vertical Pipe Spacing:
100 mm, 110 mm, 120 mm

F Post:
50 mm × 50 mm, 60 mm × 60 mm, 80 mm × 80 mm,
100 mm × 100 mm

Thickness: 1.2–3.0 mm

G Fixing: Steel or aluminum brackets

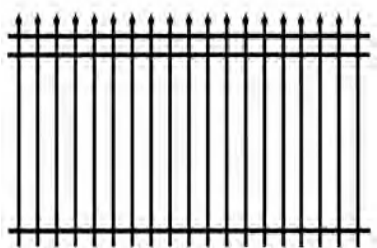
H Post Cap: Metal rain or Anti-UV PP



- Popular color is black, all RAL color can be customized;
- Double coating service is available, which can provide a service life of 10 years.

Components & Accessories

The main components of our steel fence are steel fence panels and posts as shown below:



Fence panel



Square posts

Optional Accessories



Post Cap



Mounting Brackets



Railing Brackets



Line Brackets



Railing Brackets

Production Flow Chart

01



Raw materials
(galvanized steel pipes)

02



Pipe cutting

03



Pipe punching

06



Finished steel fence
panels

05



Steel fence panel
powder coating

04



Steel fence panel
welding

Package & Delivery



Package



Delivery

Features

Easy & simple installation

Pre-punched mounting holes for easy and simple installation.

Corrosion & rust resistance

The galvanized and aluminum tubes provide excellent corrosion, rust and weather resistance.

Adapt to most surroundings

A variety of top pattern, heights and colors are available to adapt to most surroundings.

Less maintenance

The simple yet solid structure makes it virtually maintenance free.

Excellent surface treatment

Galvanized and power coating extend its service life for years.

Application

Steel fence is widely used in various commercial, residential and industrial applications, including but not limited to, villas, community gardens, schools, factories and other flower beds, lawns, sports stadiums, convention centers, squares, roads, balconies, etc.



Botanical gardens



Industrial parks



Villa yards



Factories



Leisure parks



Recreation facilities

Fence Gates-Single Swing Gate

- Fence gates are integral parts of the whole fencing system.
- It offers a convenient point of entry and works with various fence panels, post and accessories to secure your properties.
- We have a variety of single swing gates for chain link fence, curvy welded fence, 358 high security fence, steel fence, palisade fencing, temporary fence, and crowd control barrier for you to choose from.



Temporary fence single swing gate (Work with temporary fence)



Height	1.8 m
Width	1.0–1.3 m
Mesh Size	50 mm × 100 mm, 50 mm × 150 mm, 75 mm × 100 mm, 75 mm × 150 mm
Wire Diameter	3.0 mm, 3.5 mm, 3.8 mm, 4.0 mm, etc.
Frame Tube	25× 25 mm, 30 × 30 mm
Surface Treatment	Powder coating

Chain link fence single swing gate



Height	1.2 m, 1.5 m, 1.8 m, 2.0 m, 2.2 m, 2.5 m, 3.0 m
Width	0.8 m, 1.0 m, 1.2 m, 1.5 m, 2.0 m
Mesh Size	50 × 50 mm, 60 × 60 mm, 70 × 70 mm
Wire Diameter	3.0 -5.0 mm.
Post (round)	48 mm OD, 60 mm OD.
Frame Tube	32 mm OD, 38 mm OD, etc.

Steel fence single swing gate (Match with steel fence)



Height	1.2 m, 1.5 m, 1.8 m, 2.0 m, 2.2 m, 2.5 m, 3.0 m
Width	0.8 m, 1.0 m, 1.2 m, 1.5 m, 2.0 m
Vertical Tube Space	100 mm, 120 mm, 150 mm, 170 mm
Tube Size	15 × 15 mm, 19 × 19 mm, 30 × 30 mm, 40 × 40 mm
Post (square)	60 × 60 mm, 80 × 80 mm, 100 × 100 mm
Surface Treatment	Hot dipped galvanized, powder coating

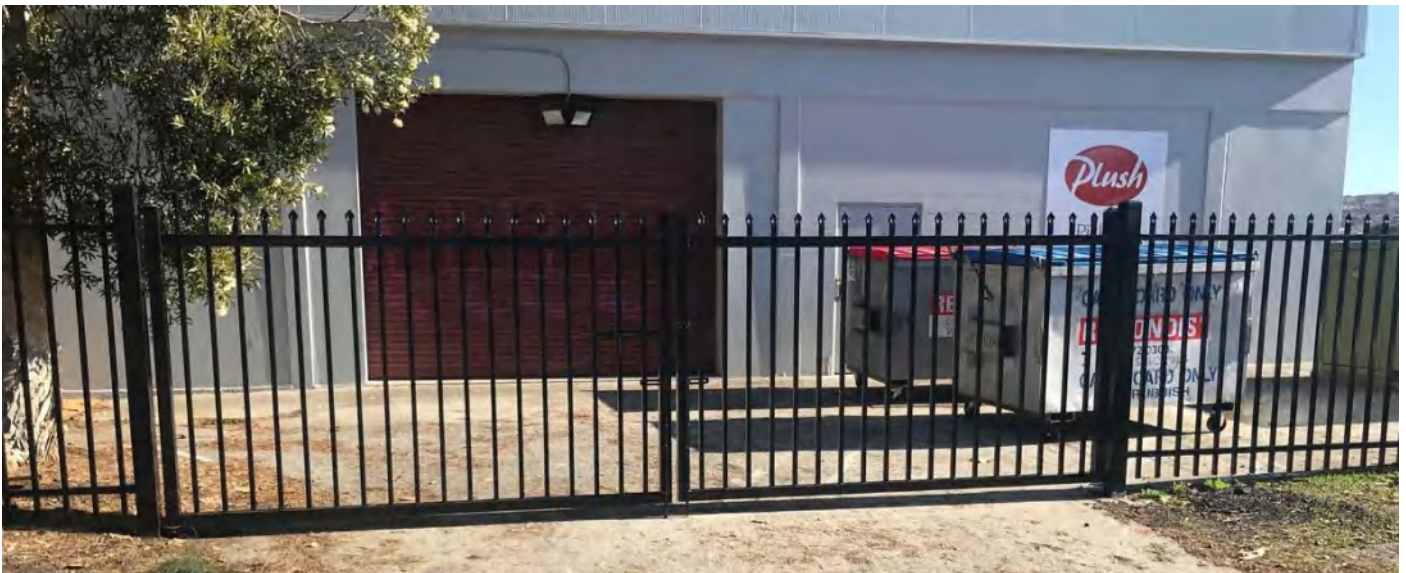
Crowd control barrier single swing gate



Height	3.0 m
Width	1.3 m
Frame Tube	40 mm OD
Surface Treatment	Hot dipped galvanized, powder coating

Fence Gates-Double Swing Gate

- Double swing gates are popular choice when you need to have to gate swing in either direction.
- Its double leaf design allows its opening angle up to 180° while its standard widths up to 10 m and heights up to 3 m ensure pedestrians and vehicles can pass through the fence easily.
- Generally, it is attached to round or square post and then connected with adjustable hinges.
- Besides, it can work with either manual or automation system to secure your property from unauthorized access.
- We have a variety of double swing gates for chain link fence, curvy welded fence, 358 high security fence, steel fence, palisade fencing and Australia temporary fence for you to choose from.

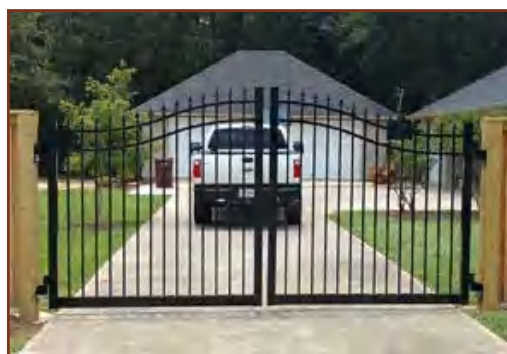


Chain link fence double swing gate



Height	1.2 m, 1.5 m, 1.8 m, 2.0 m, 2.2 m, 2.5 m, 3.0 m
Width	4.0 m, 4.8 m, 6.0 m, 10.0 m
Mesh Size	50 × 50 mm, 60 × 60 mm, 80 × 80 mm
Wire Diameter	3.0–6.0 mm
Post (round)	48 mm OD, 60 mm OD
Frame Tube	32 mm OD, 38 mm OD, etc..

Steel fence double swing gate



Height	1.2 m, 1.5 m, 1.8 m, 2.0 m, 2.2 m, 2.5 m, 3.0 m
Width	4.0 m, 4.8 m, 6.0 m, 10.0 m
Vertical Tube Space	100 mm, 120 mm, 150 mm, 170 mm
Tube Size	15 × 15 mm, 19 × 19 mm, 30 × 30 mm, 40 × 40 mm
Post (square)	60 × 60 mm, 80 × 80 mm, 100 × 100 mm
Surface Treatment	Hot dipped galvanized, powder coating

Sample photo



Fence Gates-Sliding Gate

- Sliding gates are generally used for both vehicle and pedestrian entry purpose.
- It has a ground mounted track for the gate wheel to move on. Besides, it does not require large operating space and is perfect for space limited locations.
- Sliding gates can accommodate large opening widths.
- It can work with both manual operating systems and automation systems to allow authorized vehicle & pedestrian access to the fence more easily. We have a variety of sliding gates for chain link fence, curvy welded fence, 358 high security fence, steel fence and palisade fencing for you to choose from.



Chain link fence sliding swing gate



Height	1.2 m, 1.5 m, 1.8 m, 2.0 m, 2.2 m, 2.5 m, 3.0 m
Width	4.0 m, 4.8 m, 6.0 m, 10.0 m
Mesh Size	50 × 50 mm, 60 × 60 mm, 70 × 70 mm
Wire Diameter	3.0–5.0 mm
Post (round)	48 mm OD, 60 mm OD
Frame Tube	32 mm OD, 38 mm OD, etc..

Steel fence sliding swing gate



Height	1.2 m, 1.5 m, 1.8 m, 2.0 m, 2.2 m, 2.5 m, 3.0 m
Width	4.0 m, 4.8 m, 6.0 m, 10.0 m
Vertical Tube Space	100 mm, 120 mm, 150 mm, 170 mm
Tube Size	15 × 15 mm, 19 × 19 mm, 30 × 30 mm, 40 × 40 mm
Post (square)	60 × 60 mm, 80 × 80 mm, 100 × 100 mm
Surface Treatment	Hot dipped galvanized, powder coating

Sample photo

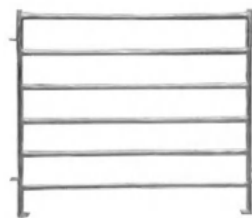


Corral Panels

- Corral panel, also known as livestock panel, is welded steel tube fence for large animals and other livestock.
- Generally, it is made of square, oval or round tubes and have high strength and solid in structure.
- It can be installed temporarily or permanently on the ground.
- We have cattle & sheep panels of different heights, lengths and number of rails for you to choose from.

Rail type

According to the rail type, our corral panels can be divided into three types as shown below.



Round rail style



Square rail style



oval rail with
square post



Specification

A Height: 950 mm, 1000 mm, 1800 mm

B Width: 2100 mm, 2900 mm

C Horizontal Rail:

Round rail: 32 mm OD, 42 mm OD

Square rail: 40 × 40 mm, 50 × 50 mm

Oval rail: 30 × 60 mm, 40 × 80 mm,
42 × 115 mm, 50 × 70 mm)

D Vertical Pipe:

Round pipe: 32 mm OD, 42 mm OD

Square pipe: 40 × 40 mm, 50 × 50 mm

E U lug **F** L lug



- Other materials and specifications are available upon request.

Specification of Cattle Panels

Round Rail Style	Height × Length	1.8 m × 2.1 m, etc.
	Horizontal rails	32 mm OD, 42 mm OD (6 round rails), etc.
	Vertical pipe	32 mm OD, 42 mm OD, etc.
	Thickness	1.6 mm, 2.0 mm, etc.
	Material	Pre hot dipped galvanized steel pipe
Square Rail Style	Accessories	4 lugs, 2 rain caps are welded on panels. 2 pins are included in one panel.
	Height × Length	1.8 m × 2.1 m, etc.
	Horizontal rails	40 × 40 mm, 50 × 50 mm (6 square rails), etc.
	Vertical pipe	40 × 40 mm, 50 × 50 mm, etc.
	Thickness	1.6 mm, 2.0 mm, etc.
Oval Rail with Square Post Style	Material	Pre hot dipped galvanized steel pipe
	Accessories	2 U lugs, 2 L lugs, 2 rain caps and 2 bases are welded on panels. 2 pins are included in one panel.
	Height × Length	1.8 m × 2.1 m
	Horizontal rails	30 × 60 mm, 40 × 80 mm, 42 × 115 mm, 50 × 100 mm (6 oval rails), etc.
	Vertical pipe	40 × 40 mm, 50 × 50 mm, etc.
Round tube with bent bottom base	Thickness	1.6 mm, 2.0 mm, etc.
	Material	Pre hot dipped galvanized steel pipe
	Accessories	2 U lugs, 2 L lugs, 2 rain caps and 2 bases are welded on panels. 2 pins are included in one panel.
	Height	5 ft, 6 ft, 2.0 m, etc.
	Width	9 ft, 10 ft, 12 ft, etc.
	Frame & Rail Round Tube	32 mm, 42 mm, etc.
	Thickness	1.6 mm, 2.0 mm, etc.
	Accessories	Welded parts: U lugs, rain caps, bases, pins
	Surface treatment	Hot dipped galvanized, galvanized + powder coated

Specification of Sheep Panels

Round Rail Style	Height × Length	0.95 m × 2.1 m, 1 m × 2.1 m, 1 m × 2.9 m, etc.
	Horizontal rails	32 mm OD, 42 mm OD (5 or 6 round rails), etc.
	Vertical pipe	32 mm OD, 42 mm OD, etc.
	Thickness	1.6 mm, 2.0 mm, etc.
	Material	Pre hot dipped galvanized steel pipe
Square Rail Style	Accessories	4 lugs, 2 rain caps are welded on panels. 2 pins are included in one panel.
	Height × Length	0.95 m × 2.1 m, 1 m × 2.1 m, 1 m × 2.9 m, etc.
	Horizontal rails	40 × 40 mm, 50 × 50 mm (5/6 square rails), etc.
	Vertical pipe	40 × 40 mm, 50 × 50 mm, etc.
	Thickness	1.6 mm, 2.0 mm, etc.
Oval Rail with SquarePost Style	Material	Pre hot dipped galvanized steel pipe
	Accessories	2 U lugs, 2 L lugs, 2 rain caps and 2 bases are welded on panels. 2 pins are included in one panel.
	Height × Length	0.95 m × 2.1 m, 1 m × 2.1 m, 1 m × 2.9 m, etc.
	Horizontal rails	30 × 60 mm, 40 × 80 mm, 42 × 115 mm, 30 × 112 mm (5 or 6 oval rails), etc.
	Vertical pipe	40 × 40 mm, 50 × 50 mm, etc.
	Thickness	1.6 mm, 2.0 mm, etc.
	Material	Pre hot dipped galvanized steel pipe
	Accessories	2 U lugs, 2 L lugs, 2 rain caps and 2 bases are welded on panels. 2 pins are included in one panel.
	Surface treatment	Hot dipped galvanized, galvanized + powder coated

Production Flow Chart

01



Raw materials
(galvanized steel pipes)

02



Pipe cutting

03



Panel welding

06



Finished corral panels

05



Surface cleaning

04



Panel spraying

Package & Delivery



Package



Delivery

Features

Portable

convenient panel size allows for easy transport and handling.

Versatile

A variety of specifications for cattle, sheep, and other animals for different stages in their growth cycle.

Convenience

Easy & quick installation and removal.

Sturdy

The high quality steel tube offers great strength and creates a sturdy structure without deformation.

Durable

High quality raw materials (galvanized steel tube) ensures its great corrosion, rust and weather resistance and extends its service life.

Application

Cattle panels and sheep panels are widely used in farms, pastures and other places for temporary or permanent security fence for cattle, sheep, horses and other large animals.



Farm



Pasture



Cattle yard



Cattle



Sheep



Sheep yard

Barbed Wire

Barbed wire allows for additional security on the perimeter fencing deterring intruders from climbing the fence. Galvanized wire offers a great protection against corrosion and oxidation caused by the atmosphere. Its high resistance allows greater spacing between the fencing posts.



Technology data:

1. Wire diameter (unit: mm, BWG, inch)

- a. Line wire and Bard wire. In general, line wire diameter is bigger than the barb wire,
b. Line wire has single type and double type, Tensile strength: 30-45Kgs/sq.mm.



Gauge of Strand and Barb in BWG	Approximate Length per kilogram in Meter			
	Barbs Spacing 3"	Barbs Spacing 4"	Barbs Spacing 5"	Barbs Spacing 6"
12x12	6.017	6.759	7.27	7.638
12x14	7.334	7.905	8.302	8.574
12.5x12.5	6.922	7.719	8.302	8.722
12.5x14	8.110	8.814	9.224	9.562
13x13	7.981	8.899	9.572	10.055
13x14	8.845	9.690	10.292	10.715
13.5x14	9.608	10.613	11.471	11.855
14x14	10.457	11.659	12.542	13.175
14.5x14.5	11.988	13.367	14.378	15.103
15x15	13.893	15.494	16.667	17.507
15.5x15.5	15.349	17.114	18.406	19.339

Product packaging

The barbed wire is commonly supplied in rolls. And there are so many barbs on the roll surface. For convenient loading handling and transporting, we are equipped different handles for your choice. Additional, it is very safe for manual operation and will not hurt people when using it.



Steel wire roller with
steel wire handle



Steel wire roller with
plastic handle



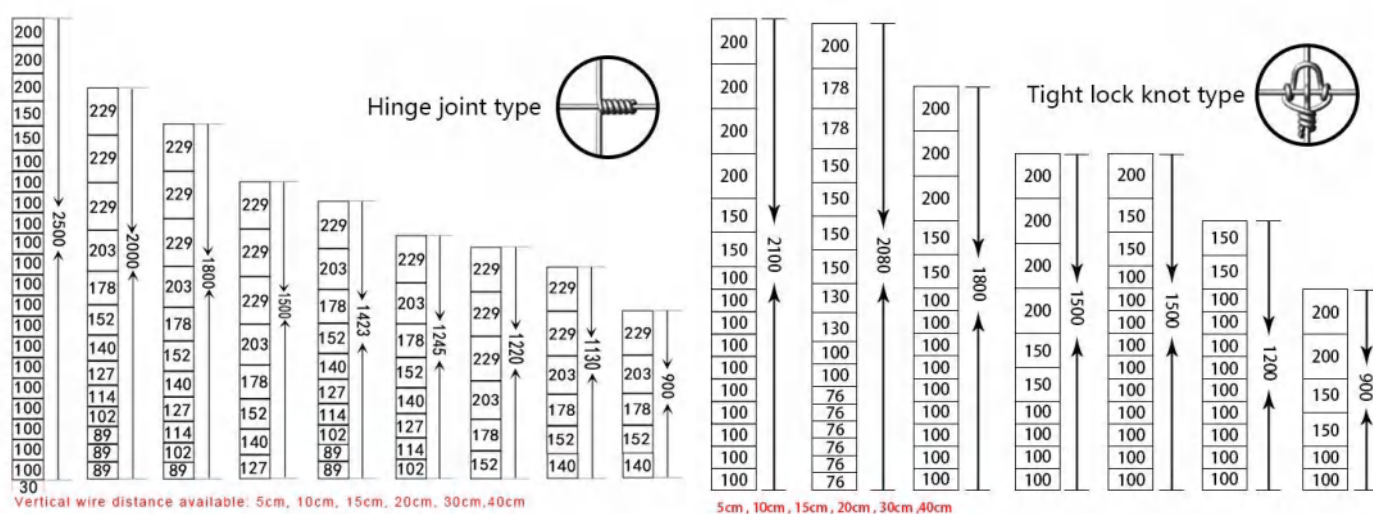
Steel wire roller with
wooden handle



Wooden roller with
rope handle

Farm Fence

Field fence is also known as Prairie fence, Cattle fence, Grassland Fence, Horse Fence, Sheep Fence, Deer Fence, Woven Wire, Livestock Fence, Hinge Joint Field Fence which is made of hot-dipped galvanized steel wire, offer high strength and tensile strength, provide safety fencing against fierce striking of cattle, horse or goats. Knotted Wire Mesh Fences make an ideal fencing material for grasslands husbandry.



Hinge joint type cattle fence



Square joint type cattle fence

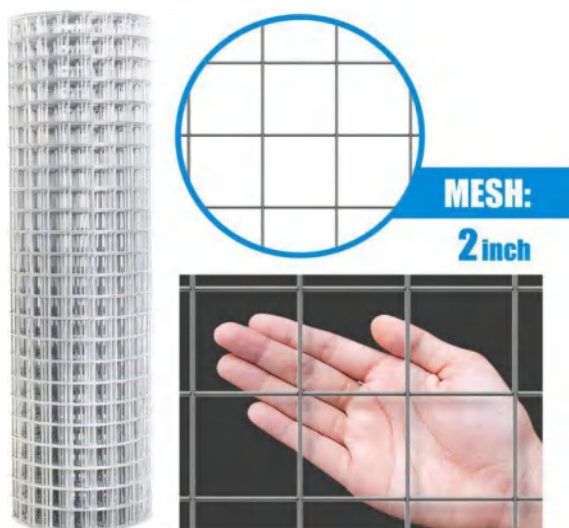


V mesh type cattle fence



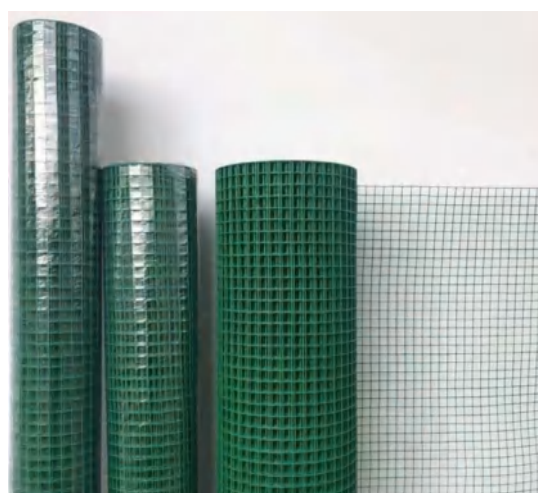
Fixed joint type cattle fence

Welded Wire Mesh

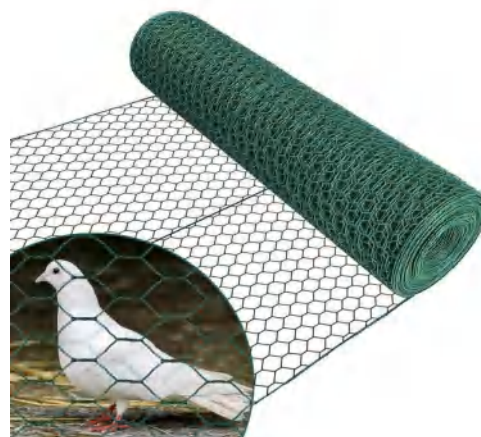
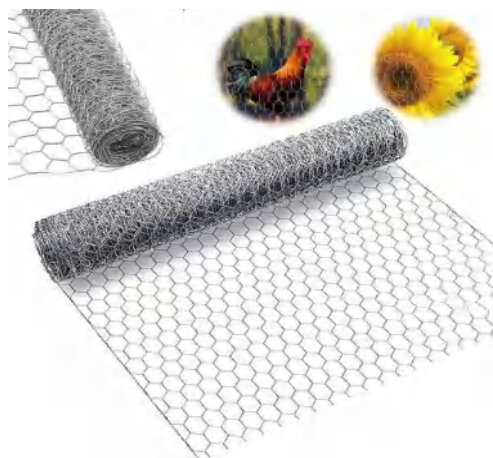


WELDED WIRE MESH

Hole size		Wire diameter		Width&Length
Inch	mm	BWG	mm	
1/2"	12.7mm	BWG16-BWG28	1.65mm-0.356mm	Width: 0.5m-2.0m Length: 25m,30m
3/4"	19.05mm	BWG16-BWG27	1.65mm-0.406mm	
1"	25.4mm	BWG14-BWG20	2.1mm-0.88mm	
1"x2"	25.4x50.8mm	BWG14-BWG19	2.1mm-1.06mm	
2"	50.8mm	BWG12-BWG18	2.76mm-1.24mm	
2"x4"	50.8x101.6mm	BWG10-BWG18	3.4mm-1.24mm	
1/4"	6.35mm	BWG19-BWG24	1.06mm-0.56mm	• Other sizes can be made as request .
3/8"	9.52mm	BWG18-BWG27	1.24mm-0.406mm	
5/8"	16mm	BWG18-BWG27	1.24mm-0.406mm	



Hexagonal Wire Netting

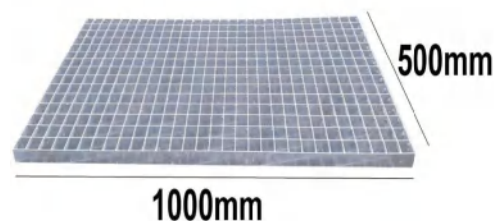


Chicken Wire / Hexagonal Wire Netting

Surface Treatment	Hot Dipped Galvanized/ Electro Galvanized/PVC Coated
Wire diameter	BWG19-BWG25
Hole size	1/4" --8"
Length	10-200m
Width	0.5-2m
Welding type	Straight Twist, Reverse Twist, Double Twist.
Process	Galvanized before or after Weaving



Steel Gratings



Common Specification of Steel Grating

Material Standard	ASTM		A36		A1011		A569		Q235		S275JR						
	Stainless steel		304/306				Mild steel & Low carbon steel, etc										
Bearing Bar (Width x Thickness)	mm	25x3	25x4		25x4.5		25x5		30x3		32x5						
		40x5	50x5		65x5		75x6		75x10...		100 x10 etc.						
	I bar	25x5x3		30x5x3		32x5x3		40x5x3 etc.									
	In	1"x3/16'		1 1/4"x3/16"		1 1/2"x3/16"		1"x1/4"		1 1/4"x1/4"							
1 1/2"x1/4"		1"x1/8"		1 1/4"x1/8"		1 1/2"x1/8" etc.											
Bearing Bar Pitch	mm	12.5	15	20	23.85	25	30	30.16	30.3	32.5	34.3	35	38.1	40	41.25	60	80 etc.
	In	19-w-4				15-w-4		11-w-4		19-w-2		15-w-2 etc					
Twisted Cross Bar Pitch	mm	38.1		50		60		76		80		100		101.6		120	
	In	2" & 4" etc.															
Surface Treatment Grating Style	Untreated(black)				Hot-dipped galvanized						Powder coated						
	Electroplate						Painting or as per customers' requirement.										
	Plain / Smooth				Serrated / Teeth				I bar		Serrated I bar						
Packing	(1) Bandage and Paperboard: Generally applies to neat steel plate; (2) Screw Locking Method: Use 4 screw rods through the aperture of the steel grid, for high strength; (3) Steel Pallet: Traditional export packing.																

***** Special Material, High Zinc Coating and New Style can be Customized. *****



Dog Kennel / Pet Cages

Material:

Wire: $\varnothing 2.3/4\text{mm}$ hot-dipped galvanized
Pipe: $\varnothing 32\text{mm}$, 1.2/1.3 mm thickness.
hot-dipped galvanized

Mesh size:

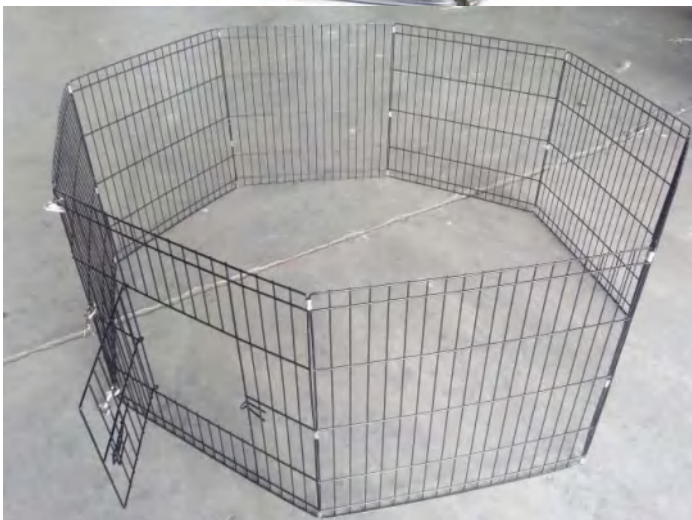
15x5mm; 10mmx5mm; 60x60mm etc.

Size:

Variable, typical size :1.5x1.5x1.8m, etc. Please contact us for more information.

Surface treatment opinion:

Spray print





Contact info:

418 Keyuan St, Baoding City
Hebei, China, 071032

info@hebeialliance.com

